

EMBROIDERY MACHINE BASICS

Available in Sam's Lab:



- Brother Inno-vis NQ1700e
- Hoops:
 - 1" x 2.5" (20 x 60 mm)
 - 4" x 4" (100 x 100 mm)
 - 5" x 7" (130 x 180 mm)
 - 6" x 10" (160 x 260 mm)
- Machine Embroidery Thread
 - **Patrons must purchase thread from staff**
 - \$0.10 per 1,000 stitches
- Stabilizer
 - \$1.00 per 12" inches
 - Adhesive Tear Away, Medium-Weight
 - Water Soluble Top Stabilizer

What to bring:

- Fabric to embroidery
 - Bring extras! Mistakes happen.
 - Less than 2mm thick. (Thinner than a beach towel.)
- A design - must be PES (.pes) format
 - Use a pre-loaded design
 - Find designs from ibroidery.com
 - Make your own with Hatch Embroidery or Brother PE Design

What is stabilizer?

Stabilizer is a material used to prevent your fabric from puckering, stretching, or tearing. Stabilizer is necessary for all embroidery projects. Without it, the stitching can be too loose or too tight. And fabric can tear or jam the machine.

What is bottom stabilizer?

Bottom stabilizer is required for all embroidery projects. It goes under the fabric. There are a lot of stabilizer to choose. It's usually available in light weight, medium weight, and heavy weight options. The main stabilizers are:

- **Adhesive Tear Away:** One side is sticky to secure to the fabric. After stitch, you tear it off. Great for woven fabrics.
- **Cut Away:** This is permanent support. Offers the most stability. Best for t-shirts and stretchy fabrics.
 - Sometimes available as **Fusible** or **Iron On** for more stability.
- **Heat Away:** Great for delicate fabrics. Dissolves when ironed.

What is top stabilizer?

Used primarily for textured fabrics: terry cloth towels, fleece, chunky knits. It helps keep the fabric pushed down as the machine stitches. Without it, the fibers of the fabric can poke through the design. Most common top stabilizer is **Wash-Away**. It will dissolve in water.

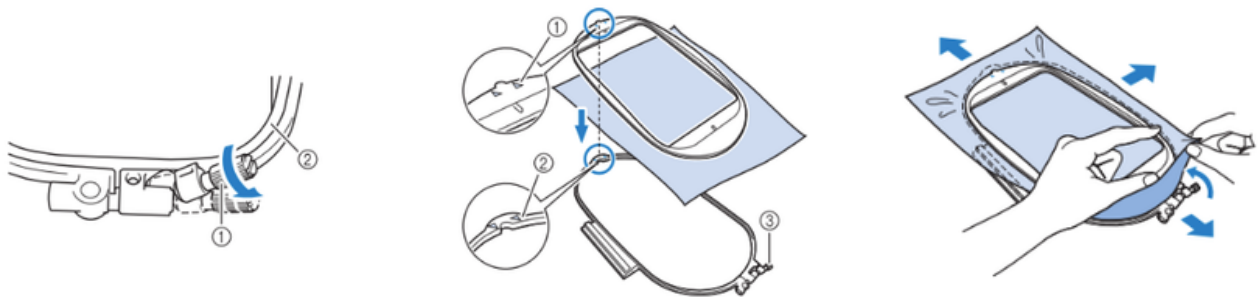


Setting up the hoop:

Pages 27 - 30 in User Manual.

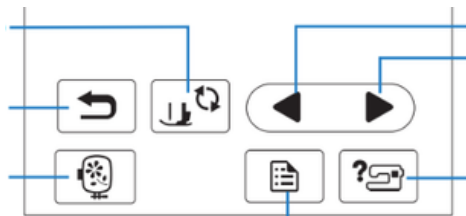
The fabric and stabilizer must be secured in a hoop. Every hoop has a screw to loosen and tighten.

1. Loosen the screw. Separate the bottom hoop from the top hoop.
2. If using Adhesive Tear Away or Fusible Cut Away, secure it to the fabric.
3. Layer the hoop in this order: bottom hoop piece, bottom stabilizer (tear away), fabric, top stabilizer (wash away), top hoop piece.
4. Push the top hoop piece into the bottom hoop piece so the fabric is inside the hoop. Smooth out any wrinkles.
5. Tighten the screw. After tightening with your hand, use a flat head screw driver to tighten it more.

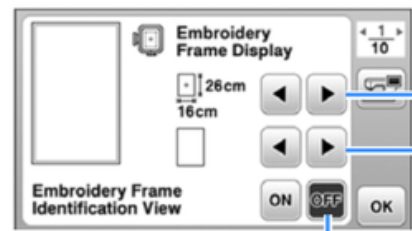


Select the hoop size:

Page 12 in User Manual.



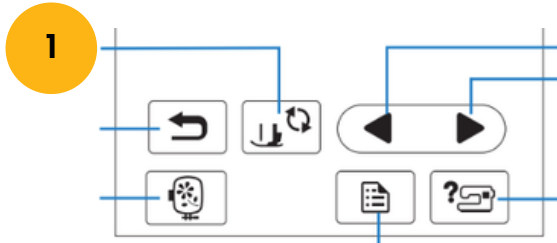
Below the touch screen are navigational buttons. In order: **Back Button, Lock Features, Pages Left/Right, Display, Settings, Help.** Tap **Settings**.



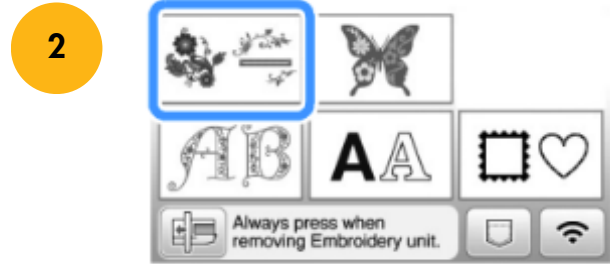
Use the arrows to pick your hoop size: 1" x 2.5", 4" x 4", 5" x 7", or 6" x 10". Click **OK**.

Embroidery Pattern

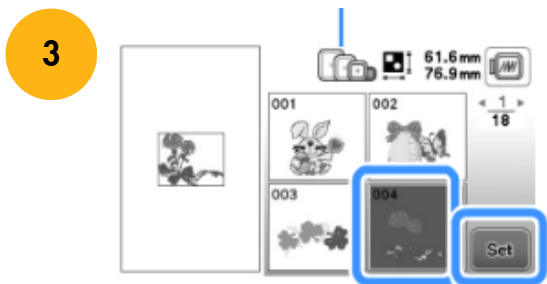
Page 31 - 46 in User Manual.



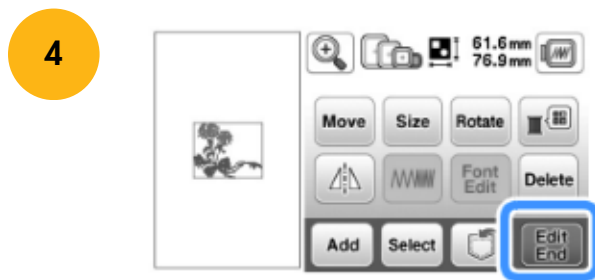
Below the touch screen are navigational buttons. In order: **Back Button, Lock Features, Pages Left/Right, Display, Settings, Help.**



Select a design category.

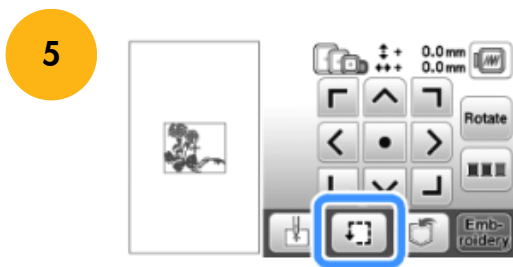


Use the **Page Left/Right** buttons to view designs. Select a design. Click **Set** to confirm.



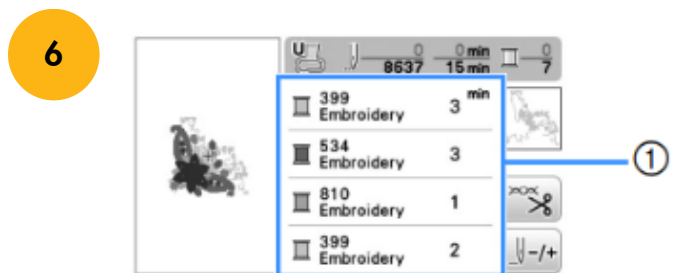
After picking a design, there are options to edit: **Move, Size, Rotate, Change Colors, Flip, Delete.**

Use **Add** to combine designs and fonts. Click **Edit End** to embroider.



Before embroidering, all items in your design will be grouped together. You can move them as one item.

The icon at the bottom of this screen lets you check the placement of your design.



The machine will list the order of thread. Thread the machine with the first color. The **Start/Stop** button will be red until the **Presser Foot** is lowered.

